

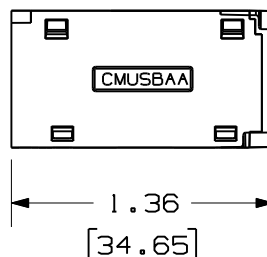
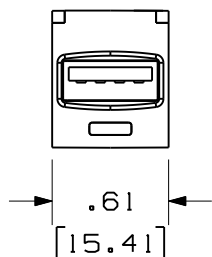
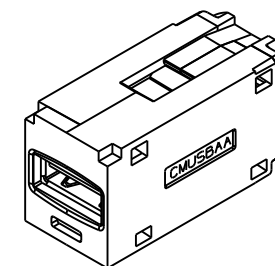
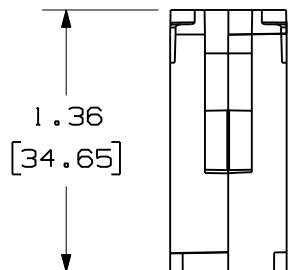
THIS COPY IS PROVIDED ON A RESTRICTED BASIS AND IS NOT TO BE USED IN ANY WAY DETRIMENTAL TO THE INTERESTS OF PANDUIT CORP.

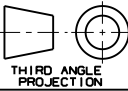
PANDUIT PART#	WEIGHT
CMUSBAA**	.020 LB/EACH PC (8.88 g/EACH PC)
IAPCMUSBAAWH	



NOTES:

1. SEE CURRENT CATALOG FOR ADDITIONAL PART NUMBER SUFFIXES TO INDICATE COLOR AND OR PACKAGE QUANTITY.
2. SEE CATALOG FOR COMPLETE LIST OF PARTS APPLICABLE FOR USE WITH THIS PART.
3. DIMENSIONS IN [] ARE METRIC.



MODEL FILENAME	M03195AC/01	SIZE	A
DRAWING FILENAME	M03195AC_DC13/01B		
MINI-COM USB 2.0 FEMALE A TO FEMALE A COUPLER MODULE ASSEMBLY CUSTOMER DRAWING			
PANDUIT [®] TINLEY PARK, IL 60487		I.I. NUMBER	N/A
		PRODUCT SPEC/ PKG SPEC	N/A
 THIRD ANGLE PROJECTION		ASSY METHOD/ TEST METHOD	N/A
		SCALE	1 : 1
DRAWN BY	MDJr	REVIEW DRAWING NUMBERS	PART NO.
DATE	11-06-09	MAT'L	SEE TABLE
CHK'D	HMK		DRAWING NO.
			03195-13

REV	DATE	BY	CHK	DESCRIPTION	ECN	R	CUST	SUP	OTH
I	6-6-11	BJN	JCO	A. ADDED SUPPLEMENTAL P/N IAPCMUSBAAWH	03195-13	JCO	JCO		
R	11-09-09	MDJr	HMK	RELEASED TO PRODUCTION	03195-13	HMK	HMK		